

## Dura 16/21/26/32W Wattage Switchable LED CCT V2 Anti-Corrosive 4ft Batten

### Part Code: 10275V2

The Dura LED CCT Anti-Corrosive Batten is part of on of BELL's flagship luminaire families. This fitting takes the reliability of the Dura Batten and adds CCT & wattage switchable functionality.

- The ideal replacement for Single/Twin Fluorescent T5 and T8 fixtures
- Colour Switchable
- Wattage Switchable



**7 Year**  
Guarantee



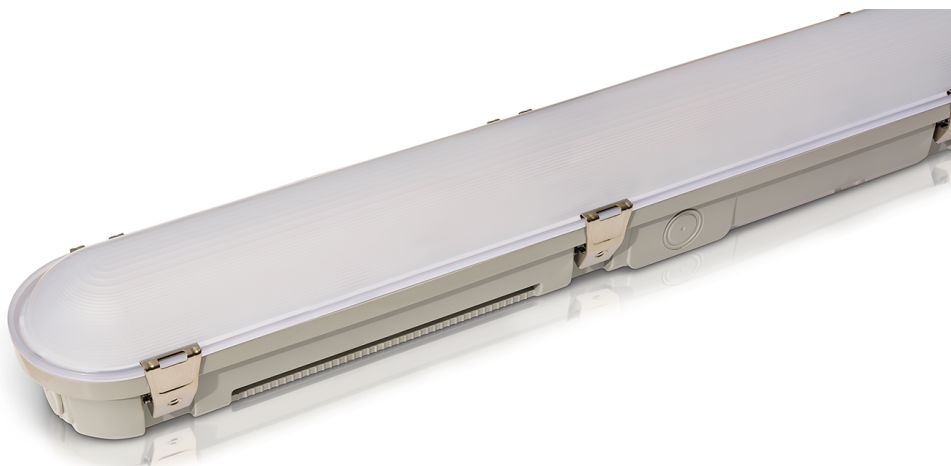
**50,000**  
Life Hours



**IP66**  
Rated



**220/240**  
Volts



## LED Integrated CCT Anti Corrosive Batten



**Product Category** Fittings / Fittings

**Application** LED Batten

**Product Warranty** 7 Years

**EAN** 5013588002804

**Commodity Code** 9405423100

**Country of Origin** CN

### Technical Specification

Watts (W)	16/21/26/32
Volts (V)	220/240
Colour Temp (K)	3000/4000/6000
Lumens (lm)	16W = 2579 (3/4/6000K) / 21W = 3311 (3000K) - 3369 (4000K) - 3311 (6000K) / 26W = 3874 (3000K) - 4186 (4000K) - 3952 (6000K) / 32W = 4553 (3000K) - 5051 (4000K) - 4967 (6000K)
Lumens per Watt (lm/W)	142-161
CRI (ra)	85
Frequency (Hz)	50/60
LED Drive Current	90mA
Energy Consumption (kWh/1000h)	32
Life Hours	50000
Switching Cycles	25000
Impact Protection	IK10
IP Rating	IP66

### Packaging Information

Height (mm)	78
Width (mm)	96
Length (mm)	1270
Diameter (mm)	20
Individual Product Weight (kg)	1.45
Single Carton Height (mm)	83
Single Carton Width (mm)	100
Single Carton Depth (mm)	1275
Single Carton Weight (kg)	1.6
Individual Volume	0.0105825
Outer Box Qty	6
Outer Carton Barcode	10275V2000006
Outer Box Height (mm)	180
Outer Box Width (mm)	315
Outer Box Depth (mm)	1290
Outer Box Weight (kg)	10.8
Outer Box Volume	0.073143

## LED Integrated CCT Anti Corrosive Batten

Construction	
Primary Material	Polycarbonate

Electrical Information	
Electric Class	1



## LED Integrated CCT Anti Corrosive Batten

Additional Information	
Beam Angle	120°
LED Chip	Samsung